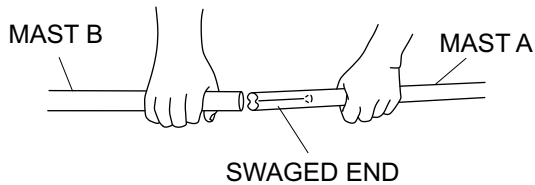
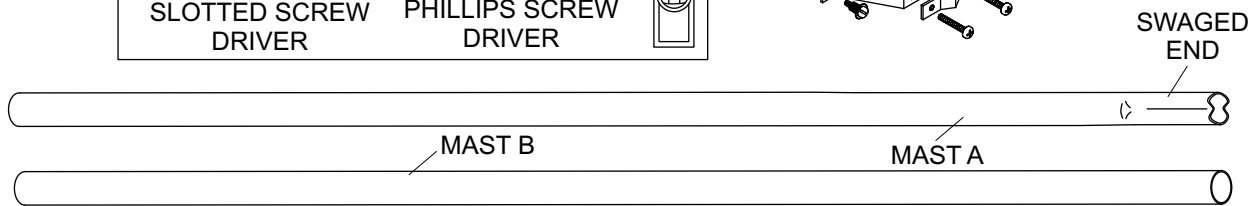
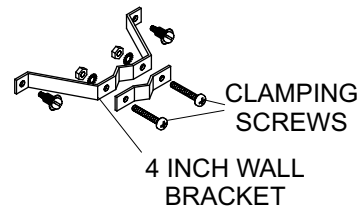
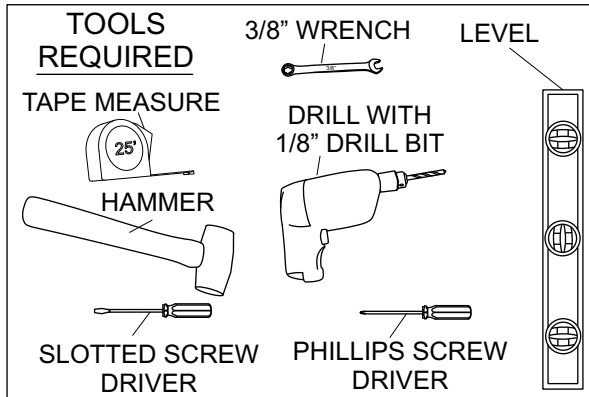


4" WALL MOUNT

INSTALLATION

PROPER INSTALLATION IS IMPORTANT. IF YOU NEED ASSISTANCE, CONSULT A CONTRACTOR, ELECTRICIAN OR TELEVISION ANTENNA INSTALLER (CHECK WITH YOUR LOCAL BUILDING SUPPLY, OR HARDWARE STORE FOR REFERRALS).

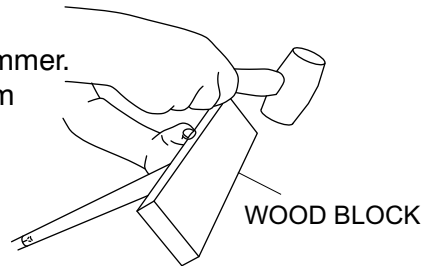


1

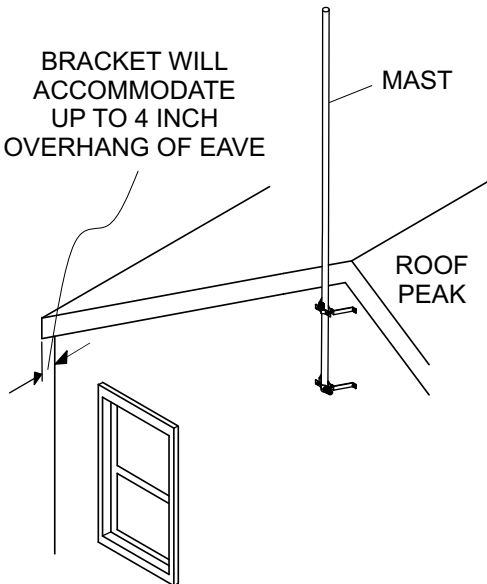
Slip the swaged end of mast A into the round end of mast B.

2

Tap the two sections together with a hammer. A piece of wood will protect the end from damage.



BRACKET WILL ACCOMMODATE UP TO 4 INCH OVERHANG OF EAVE



3

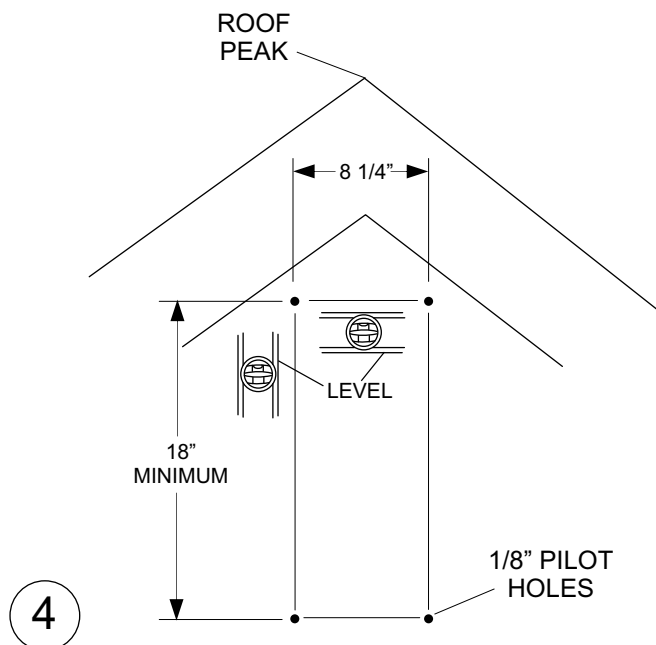
Select a location that will provide the highest, unobstructed position for the wind sensors.

MAXIMUM INC

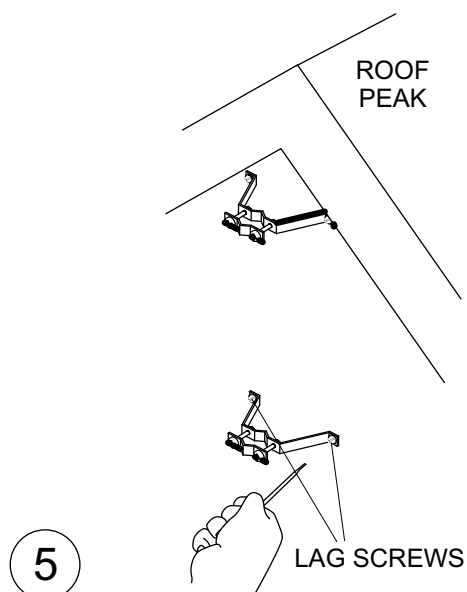
30 Samuel Barnet Blvd.
New Bedford, MA 02745
(508) 995-2200

4" WALL MOUNT

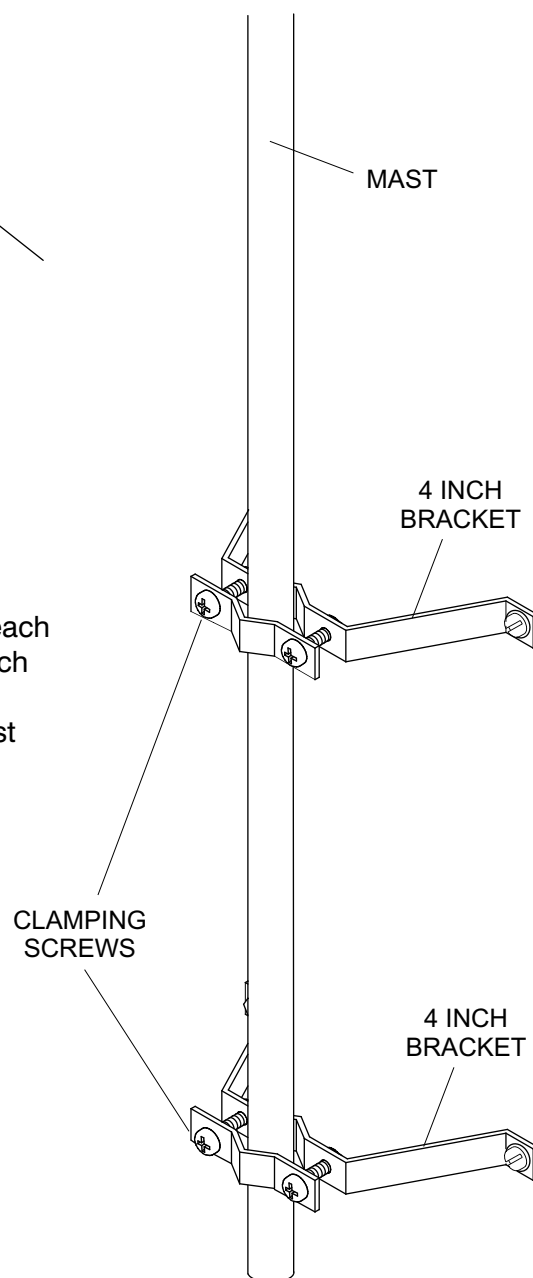
INSTALLATION



Drill two 1/8" level pilot holes 8 1/4" apart for each bracket. Brackets must be separated from each other by at least 18" for mast stability. Both brackets must be aligned vertically for the mast to be straight when installed.



Secure the brackets with the lag screws



Slip mast into brackets and tighten with the carriage bolts.

MAXIMUM INC

30 Samuel Barnet Blvd.
New Bedford, MA 02745
(508) 995-2200